



Stainless Steel Staircase and Glass Balustrade

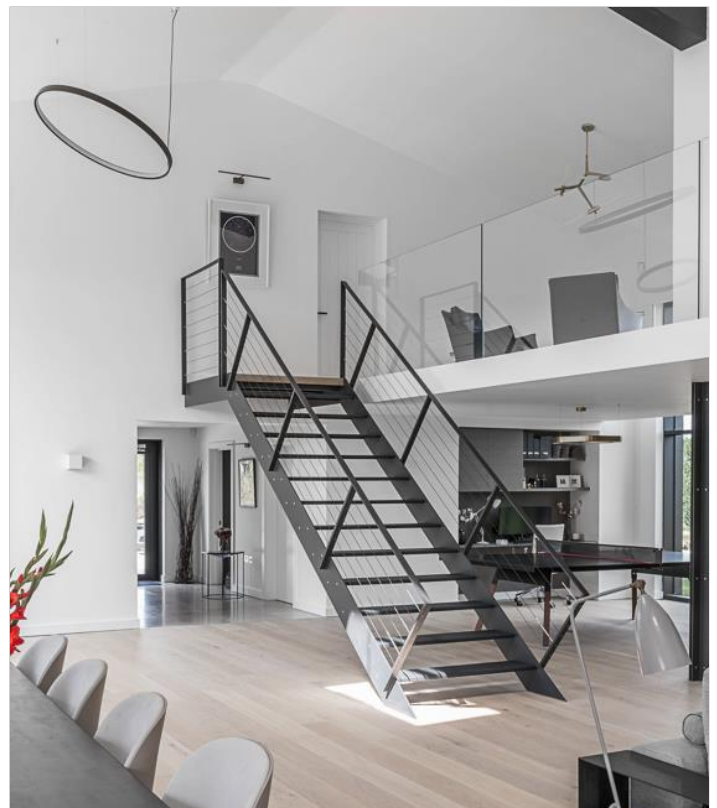


On this project Hawkins Steel Ltd worked closely with our client to design this unique staircase. The brief was clean edges with neat connections that were to be seen.

The staircase was fabricated in the Hawkins Steel workshop at our head office in Banbury using a combination of laser cut profile and machined components. On completion, all steelwork was shotblasted & powder coated with a bespoke made textured powder which was custom produced to match the client's existing windows and doors.

The balustrade utilised a Pro-rail aluminium base track fitted to the internal steelwork, this track was then wrapped in plasterboard and decorated. Low iron toughened safety glass was used to give clear, neat crisp lines. Wire rope fittings with black galvanised wire rope were used to give this stunning finish.

Included in this project was also powder coated aluminium rafter cladding and bespoke fabricated angle columns.



Telephone: 01295 252363

Email: info@hawkins-group.co.uk

Website: www.hawkins-group.co.uk



Client: Private, Residential
 Duration: 6 Weeks
 Location: Warwickshire
 Contract Value: Undisclosed

ROOFING

PROJECTS

LOGISTICS

STOCKHOLDING

FABRICATION